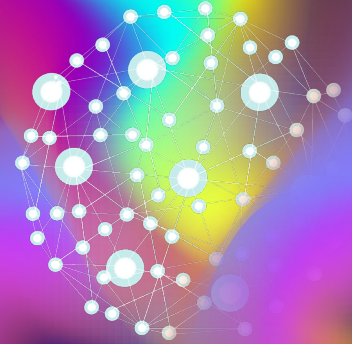


# Generative AI Strategy at KSPT

**An Implementation Framework for the AI Strategy**

*By SSB*





# Objectives

To become AI conversant

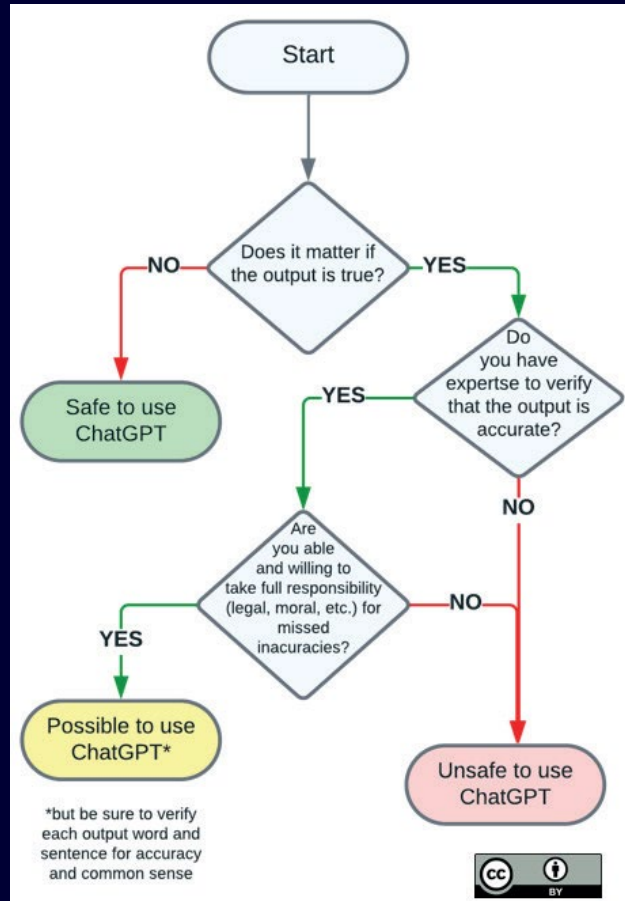
To “Use It” and NOT “Lose It or *Left behind*”

To responsibly use and leverage the benefits of ChatGPT for KSPT business

Empower employees with the use of information

Act as a supplemental tool for teaching, learning and administration

# Assessment of When it is Safe to Use ChatGPT



# Responsible Use of ChatGPT

## *Responsible use of ChatGPT*

Become familiar with the capabilities of ChatGPT
Properly attribute their sources
Ensure your fine-tuning or para-phrasing process is transparent
Make sure you are familiar with the policies of the institution
ALWAYS use the tool ethically
Use it as a support ONLY
Analyze and verify the generated output
Use a plagiarism detection tool

# Responsible Use of ChatGPT

## *Responsible ChatGPT use for Educators (teaching & Learning)*

ChatGPT may be used as a tool for assignments and class activities, and all work submitted must be original and cite any text generated by the model. Submitting the work for class without disclosing the use of the model is strictly prohibited and failure to disclose the use of ChatGPT will result in academic penalties.

Co-writing with ChatGPT is assumed. In some course, students may use ChatGPT as needed and do not need to disclose their use of ChatGPT. Verify which courses allow this.

The use of ChatGPT is prohibited for all assignments and class activities. All work submitted must be original and completed by the student. The use of ChatGPT in this class will result in academic penalties.

# Key Considerations

1. A clear understanding and expectation of ChatGPT's use in the classroom
2. Align the course learning objectives with the use of ChatGPT
3. Provide training and support on how to use ChatGPT responsibly including proper attribution
4. Provide a transparent approach to using ChatGPT to enhance teaching and learning
5. Ensure academic integrity and data privacy
6. Ethical considerations of bias, fairness, transparency and accountability
7. Collaborate with educators, researchers and the community at large on new technology developments



# Challenges and Limitations

1. AI models may generate inaccurate or biased data.
2. Lead to biased or inappropriate responses based on gender, race etc.
3. Providing sensitive information is risky
4. Limited understanding and context may be present - therefore difficult to understand complex human emotions
5. Overreliance on AI can result in errors
6. Updates and continuous improvements are key to maintaining relevance.



# AI Detection Software

Detection Software	Website Link
GPTRadar	<a href="#">GPT Radar   AI text detector app</a>
Originally.AI	<a href="#">Originality AI Plagiarism and Fact Checker - Publish With Integrity</a>
GPTZero	<a href="#">GPTZero   The Trusted AI Detector for ChatGPT, GPT-4, &amp; More</a>
AI Detector Pro	<a href="#">AI Content Detector   GPT Detection Tool - AI Detector Pro</a>
GPTKit	<a href="#">GPTKit - AI Generated Text Detector Tool for Chat GPT</a>
Turnitin	<a href="#">Empower Students to Do Their Best, Original Work   Turnitin</a>
CopyLeaks	<a href="#">AI-Based Plagiarism &amp; AI Content Detection   Copyleaks</a>
ZeroGPT	<a href="#">AI Detector - Accurate Chat GPT, GPT4 &amp; AI Text Checker Tool (zerogpt.com)</a>
Winston AI	<a href="#">The Most Trusted AI Detector   ChatGPT Detection Tool (gowinston.ai)</a>
SciScience Academic AI detector	<a href="#">AI Detector for original academic content   SciSpace (typeset.io)</a>



# Rethinking Assessments



- Avoid setting questions that ChatGPT can easily answer
- Make use of authentic assessment methods
- Determine where and how to look for cheating
- Integrate detection software
- Have in-class presentation / Q&A

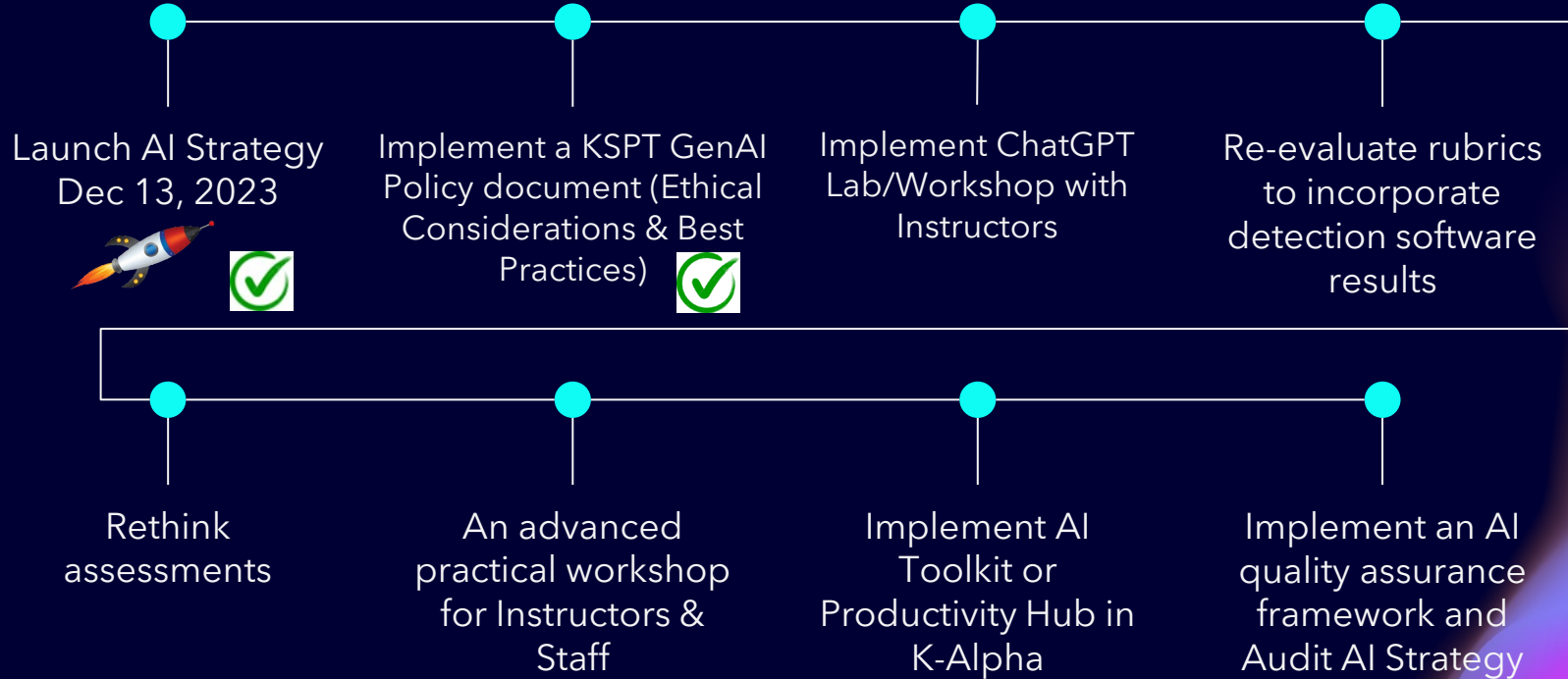


- Rewrite assessments to include the use of ChatGPT
- Re-evaluate and rewrite rubrics to incorporate the detection software results
- Use time series analysis for questions
- References can be used as evidence

# AI Education Framework

<b>Governance</b>	<b>Pedagogy</b>	<b>Operations</b>
Educational leadership team	Leadership and Academics	Management and IT
Manage the risks, ethics, integrity, privacy, security, and accountability.	Manage the selection and use of AI products	Manages the implementation, adoption, and evaluation of AI tools.
Develops and implements guiding policies at the institutional level	Develops and implements a set of standards/best practices for the selection and use of AI tools for academic and classroom use.	Develops and implements training and support to ensure adoption at the institution.

# AI Strategy Critical Path Activities



**Thank you!**

**An Implementation Framework for the AI Strategy**

*By SSB*

